

Burlington Teen Tour Band Handbook



Name: _____

Section: _____

Table of Contents

Welcome to the Band.....	2
Band History, Band Hierarchy	
Stay Connected	4
Social Media, Website, Weekly Emails, Band Tape, Section Leaders	
Get Involved	5
Volunteering/Fundraising, Band Executive	
Band Practice	7
When, What to Bring, Absence, Attendance	
Music	9
Instruments, Sheet Music	
Uniforms	10
Earning a Uniform, Care and Rules, Uniform Components	
Marching	12
While Standing, Marching, Dressing, Turning, Terms	
Performances	17
Loading Up, Buses, Truck Etiquette, Free Time, Rules, Heat/Cold	
Travelling/Tours	19
Rules, Advice, Tour Costs, Chaperones	
Moving Around In The Band	20
Promotion, Section Leader, Switching Sections	

Welcome to the Band!

This handbook is designed to answer any questions you may have about the band. Everything from how to earn your uniform to performing for the first time is covered here to help you adjust to life as a Burlington Teen Tour Band member!

Band History

Founded in 1947 by Elgin Corlett, the band was first named the "Burlington Boys and Girls Band". By 1952, the Burlington Boys and Girls Band had grown to over 150 members, and then in 1965, the band officially acquired the name "Burlington Teen Tour Band". Since then, the band has grown to become Canada's oldest and largest youth marching band.

Band Hierarchy

The band management is arranged in a hierarchy of authority as follows:

Managing Director

The current Managing Director of the band is Rob Bennett. As the Managing Director, responsibilities include taking charge of many day to day tasks that allow the band to function, some of which include planning performances, dealing with administrative business, organizing tours, as well as many other tasks. The Managing Director has the final say in all aspects of the running of the band.

Musical Director

The Musical Director, Sir William Hughes, is the second in command in the band hierarchy. His responsibilities include developing the musical ability of the band, as well as composing and ordering new music. Furthermore, he is responsible for the musical positions of band members within their respective sections, and promotions are brought to him for approval before taking effect.

Instructors

Below the main directors stand the numerous instructors within the band. Generally, each is assigned to aid in the development of one or two sections. The instructors are as follows:

Colour Guard: Mary Anne Quaglia

Flutes: Jen Vaughan

Clarinets: Francis Smith

Saxophones: Francis Smith

Trumpets: Jim Heaslip

Lower Brass: Jim Heaslip

Drumline: Lorne Ferrazzutti, Mike Peachey, and Matt Wicks

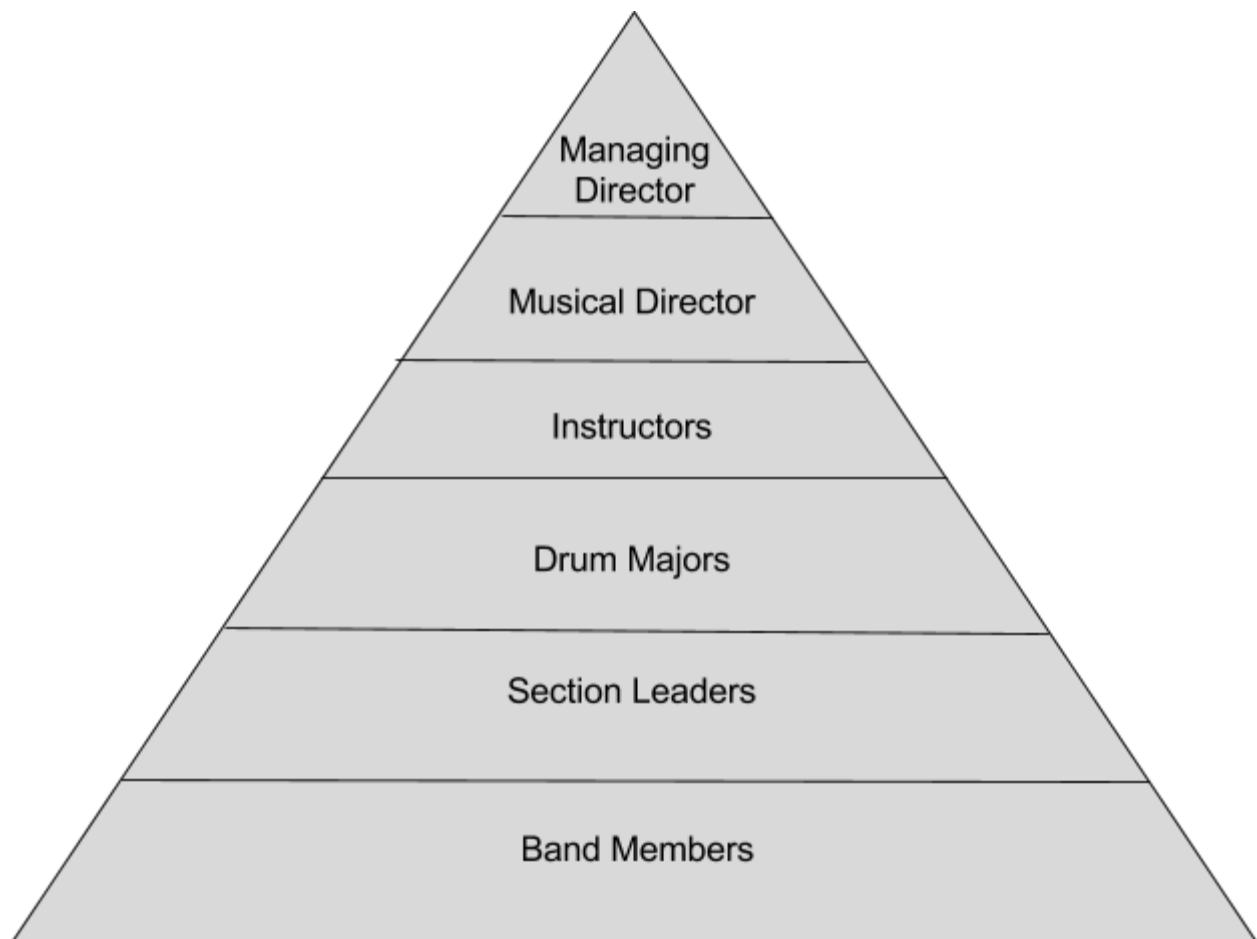
Instructors carry out responsibilities including running sectionals every month, working with sections on marching and playing skills during practice, as well as other administrative tasks.

Drum Major

The position of Drum Major is the highest that a Band Member can hold within the organization. As the leaders of the band, Drum Majors are responsible for bridging the gap between Band Management and Band Members. This includes dealing with section conflicts that are outside of the scope of the Section Leaders, carrying out tasks to improve the overall function of the band, as well as relaying information between Management, Section Leaders, and the rest of the band. Furthermore, the Drum Majors command the band during performances, as well as conduct the field show and other music.

Section Leaders

Section Leader is the only elected position within the band hierarchy (elections are held every August). As the name suggests, the Section Leaders are responsible for the running of their respective sections. This includes planning extra sectionals, attending most (if not all) practices and performances, contacting section members, mentoring new members, and a host of other activities. If you have any questions or concerns about band, approach your Section Leader before a higher position. If they cannot deal with it, they will bring it to the attention of those higher on the hierarchy.



Stay Connected

We encourage band members and their families to stay connected with the band via a variety of resources...

Website

For more information on history, events, tours, performances, and much more, you can visit the band's website at **www.teentourband.org**. Under the "Members Only" section of the website, you can also find the Band Calendar, which is to be checked routinely to ensure you are aware of all upcoming practices and performances. Please sign up on the website for access to the "Members Only" area.

Weekly Emails

Through the website, you should sign up for the band's weekly emails. These emails are typically sent out on Mondays, and they outline the events, practices, performances, etc. for the week. Visit the "Weekly Updates" section of the band's website for more information.

Band Tape

The band tape is another great resource to use to keep up to date on upcoming events. The tape is updated weekly with the Weekly Band Updates. To reach the band tape, you can call **905-632-9590**.

Remind 101

If you would like to receive updates from the band via text message or e-mail as they happen, signing up for the band's remind is a great option. Messages will include:

- Music Centre closure & cancelled practices due to bad weather
- Booster meetings
- Change of arrival time for a performance
- Return times to the Music Centre when the band is away performing (no more calling to a recorded message!)
- Cancelled sectional
- Reminders of important dates (cut offs etc.)
- and so much more...

You can opt out of this service any anytime you wish by texting STOPALL to 81010.

To sign up for the **BTTB - Reminders and Alerts** just text **@c8cf4b** to **(289) 217-0608**

If you wish to receive notifications via E-mail, simply email **c8cf4b@mail.remind.com** and **leave the subject line blank**.

Section Leaders

The first practice you join, your respective Section Leaders will give you a slip with their contact information on it. Don't hesitate to contact them with any questions or concerns you may have. They will be happy to help you! Here is the contact info for each set of Section Leaders:

Colour Guard	<i>colourguardbttb@gmail.com</i>
Flutes	<i>flutesbttb@gmail.com</i>
Clarinets	<i>clarinetsbttb@gmail.com</i>
Saxophones	<i>saxophonesbttb@gmail.com</i>
Trumpets	<i>trumpetsbttb@gmail.com</i>
Lower Brass	<i>lowerbrassbttb@gmail.com</i>
Drumline	<i>drumlinebttb@gmail.com</i>

Social Media

To follow the band on social media, you can like “**Burlington Teen Tour Band**” on Facebook. Additionally, you can follow the band **@BTTB1** on twitter, **@burlingtonteentourband** on Instagram, and **Burlington Teen Tour Band** on YouTube.



@burlingtonteentourband



Burlington Teen Tour Band



@BTTB1



Burlington Teen Tour Band

Get Involved

Booster Organised Fundraising

Fundraising is an integral part of the band, as events make it possible for the band to go on tours. Sending uniformed members around the city to fundraise gives the band great publicity in our community!. Booster-organised fundraising occurs throughout the entire year, which includes raffle blitzes, sticker days, and other events. Each band member is required to complete a certain number of fundraising shifts depending on the event. Participating in additional, non-mandatory shifts is always recommended, as it helps the Boosters generate more funds to support the band. You will be rewarded for going above and beyond with personal incentive points, which you can redeem to reduce the cost of your tour!

Band Executive

The Band Executive is a great group to get involved in. Elected annually, this group of band members works with management to run social and fundraising events. These include the Band Formal, Spaghetti Dinners, spirit wear, 5 year band rings, and other great social band trips. Elections for an executive position happen in December of each year, so make sure to listen to announcements regarding any upcoming elections! The band executive meets on the first Tuesday of every month.

Here are the Band Executive positions:

President	The President of the Band Executive has a number of responsibilities, including putting together agendas for the monthly meetings, checking minutes from past meetings, as well as helping out other executive positions when they need it. Outside of the Executive, the President attends monthly Booster meetings to keep the BTTB Boosters up to date on the Band Executive's activities.
Vice-President	The Vice-president is responsible for Presidential functions when the President is not able to attend a meeting or function. Furthermore, they are responsible for the ordering of 5 year band rings, as well as Winter Band Jackets. Much like the President, they assist the Executive when needed.
Secretary	The Secretary is responsible for taking minutes at the monthly meetings, as well as sending out thank you cards and other acknowledgments.
Publicity	Publicity is responsible for promoting events that the Executive hosts. These events include Spaghetti Dinner, Canada's Wonderland trips, etc.
Treasurer	The Treasurer controls all money that passes through the hands of the Executive. Responsibilities include counting and depositing money at the bank, and writing cheques.
Social	Social is responsible for putting on events to involve the band. These can include trips to Canada's Wonderland, and Skyzone. Perhaps most importantly, Social is responsible for the planning of the annual Formal celebration, which is hosted at the beginning of January.
Fundraiser	The job of fundraiser is to put on events to raise money for the band executive. Events include the semi-annual Spaghetti Dinner, as well as Spirit Wear.

Band Executive Fundraising

The Band Executive hosts additional fundraising events throughout the year that helps pay for social events including Formal. Some of these events include selling coupon books, spirit wear, hosting the Spaghetti Dinner, and more. Band members are encouraged to partake in these events in whatever way they can!

Band Practice

When does the band practice?

The band practices every Sunday from 2-4pm and every Wednesday from 7-9pm. Additionally, the Colour Guard holds weekly sectionals on Tuesdays from 7-9pm, as well as Drumline on Mondays from 7-9pm.

Although practice starts at these times, it is important that band members arrive before-hand in order to be prepared. Aim to arrive to all practices at least ten minutes beforehand. After regular practice, announcements are held to inform the band of upcoming performances, sectionals, as well as other announcements. If you have school events or another community event, you can make an announcement to advertise it to the band. After this, practice is finished. Please note that although practice officially ends at either 4 or 9 pm, announcements run past these times. It is recommended that members stay for at least a few minutes after practice as well, in case a section leader or another member of the band management needs to communicate with you.



Additional functions include Uniform Tryouts (12-1:30pm on the first Sunday of every month), Woodwind Sectionals (12-1:30 on the second Sunday of every month), Brass Sectionals (12-1:30 on the third Sunday of every month), and New Member Sectionals (12-1:30 on last/fourth Sunday of every month). Also, please note that during the months of July and August, Wednesday evening practices are off site. Please make sure to check the weekly emails and “Members Only” calendar for the weekly locations.

All sectionals, practices, and performances are subject to change depending on performances, holidays, etc. This is why it is very important to regularly check the band email and band calendar to keep up to date on everything.

What should I bring to practice?

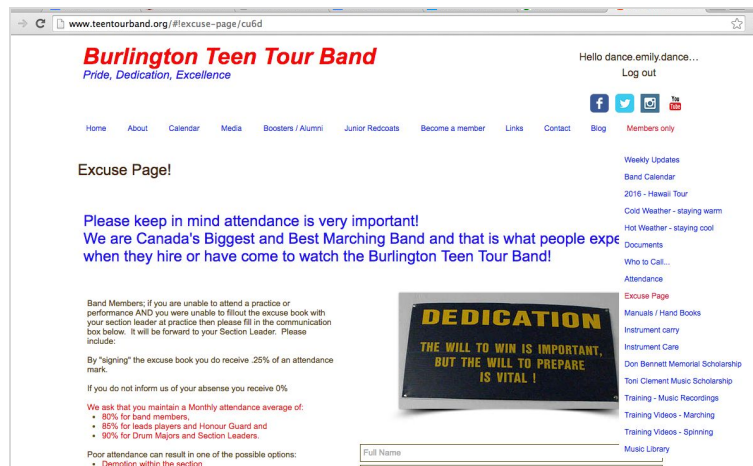
Always bring your instrument to practice! (For Colour Guard, this means a crossbelt). Likewise, you should always have your Personal Music Folder and a pencil with you at all times. Your personal folder should always contain all of the music in the band’s repertoire. Be sure to visit the “Music Library” on the band’s website often to make sure you are up to date!

You should always be prepared to march outside, regardless of the weather. That means bringing extra layers in the winter (i.e. hats, gloves, warm coat, appropriate footwear), and things for sun protection in the summer (i.e. hat, sunglasses, sunscreen, water bottle, running shoes).

What to do when you are going to miss a practice?

If you are going to be missing a practice, performance, or sectional, you must let your section leaders know **in advance**. Before or after practice, they will take you to sign the “Excuse Book” which lets them know of the date and reason for absence. It is important to do this in advance of missing a practice, or as soon as you know you are going to be away.

However, if the absence is not known well in advance, and you are unable to sign the “Excuse Book”, then there is an online excuse form called “Excuse Page”, which is listed under the “Members Only” section of the website. This is only to be used in cases when you are truly unable to sign the Excuse Book in advance. When you submit an online excuse, you will receive a reply back from Band Management to inform you that your excuse has been received.

The screenshot shows the website for the Burlington Teen Tour Band. The header includes the band's name, tagline 'Pride, Dedication, Excellence', and a navigation menu with links like Home, About, Calendar, Media, Boosters / Alumni, Junior Redcoats, Become a member, Links, Contact, Blog, and Members only. The 'Excuse Page!' section contains a message about the importance of attendance, stating they are Canada's Biggest and Best Marching Band. It includes instructions for members to fill out the excuse book and a form with a 'Full Name' field. A graphic with the text 'DEDICATION THE WILL TO WIN IS IMPORTANT, BUT THE WILL TO PREPARE IS VITAL!' is also visible. The right sidebar lists various resources like Weekly Updates, Band Calendar, and Training Videos.

Please note, a reply back does not guarantee that your excuse has been accepted as “Excused” under your attendance, but simply that it has been received.

When Section Leaders take attendance, they can either mark you as “absent” or “excused” which are worth different values in your attendance. If a member did not let the section leader know of their absence, or the excuse was invalid (i.e. “I have work”) then a Section Leader is required to mark a member as “absent” (no mark) instead of “excused” (.25 of a mark). Examples of valid excuses include sickness, certain family events, etc. *Please note, that work is **NOT** a valid excuse and will be marked as absent.*

What should my attendance look like?

Band members are required to maintain 80% attendance or greater, principal positions an 85% or greater, and Section Leaders, Leads, and Drum Majors a 90% attendance average or greater. Attendance at performances is very important and should be prioritized. Please note that all full band performances taking place in Burlington (Sound of Music, Canada Day, etc.) are mandatory since it is our hometown. If you are going to miss a mandatory performance, you must speak with management first **AND** have a valid excuse. Other out of city mandatory performances include the Toronto Santa Claus Parade and the Oktoberfest Parade.

If after 5 years in band, your average attendance is 80% or greater, you will receive a Band Ring, which is presented to you at the Band Formal.

Music

Do I need to know how to play an instrument to be in the band?

You don't need previous musical skill in order to be a member, nor do you need to know how to play an instrument prior to joining the band. Although musical capability is not a requirement to join and practice with the band, your musical development whilst in the band contributes to the earning of a uniform and the ability to perform with the band. It is for that reason that we highly recommend that you sign up for music lessons with the City of Burlington once you have joined.



Do I need my own instrument or can I borrow one?

It is recommended that you have your own instrument, either purchased or rented. However, if for some reason you are unable to afford to purchase or rent an instrument, please direct your concerns to the Musical Director. Depending on the instrument, circumstances, etc. please note that the time allowed to borrowing instruments may vary and may not be infinite. Additionally, all large instruments (tubas, sousaphones, drums, colour guard equipment) are supplied to band members by the Band.

How do I get music to practice with? Where can I find it?

Section Leaders will provide you with a "March Pack" during your first practice which consists of the music from the band's marching order. Additional music can also be found on the band website under the "Music Library" section. It is important that you print off all required music and keep it organized in your personal music folder.

Are there any other ways to get involved in my Section?

Outside of being a regular member, there are many small ensembles that are available to members. These include the Flute and Sax Quartets, as well as the Fanfare Team in the trumpet Section. If you are interested in becoming a part of one of these, ask your Section Leader for details on how to get involved!



Uniforms

Earning a Uniform

When you join, you are required to attend practices, sectionals, as well as come in early with your section leader for extra help. However, in order to actually perform with the band, you must first earn your uniform by successfully passing the “uniform tryout”. This is a series of marching and playing tasks, as well as a quiz regarding the history of the band. Uniform tryouts are held on the first Sunday of every month at 12pm. A Section Leader will accompany you during the tryout to provide you with support and encouragement. Even if you don’t feel you are ready, we encourage you to tryout for your uniform anyways. That way, you will have practice with the tryout process!



While preparing for the tryout, please ask your section leader to provide you with a copy of the “Uniform Tryout Sheet” so that you can see what you will be tested on. Additionally, please arrange with your Section Leader to come in outside of band (usually before a practice) to work on marching and/or playing with you. Your Section Leaders will have a New Member Package dedicated to your learning as a band member, and during your training periods both the Section Leader and yourself will work through the package together.

There is a portion of the test where a Drum Major will ask you questions about the history of the band. For information on the history, please visit the band’s website under the “About” section.

Can I still come to performances without a uniform?

Absolutely! While you are working towards earning your uniform, you are more than welcome to accompany the band to performances in order to see how a performance day runs. Just make sure to bring a band jacket, or see your Section Leader if you don’t already have one.

Uniform Care and Rules – While in Uniform

Once you have earned your uniform, there are a few rules to follow regarding your physical uniform. While wearing the uniform, there is to be no swearing, public display of affection, or inappropriate behavior of any kind. You wear your uniform either all the way on, or all the way off (no suspenders hanging down, or tunics undone). When tunics are set down, they are to be folded PROPERLY first, then placed on top of your hat. Please ask a Section Leader for help

regarding your uniform. When in uniform, you are not allowed to wear any makeup, visible jewelry, or piercings.

Uniforms are cleaned en mass for a price of \$7 a band member. If a member chooses to forgo the mass cleaning, they may get it dry cleaned privately and bring it back by the specified deadline with a receipt. Please listen to announcements for more information on upcoming mass cleanings.

Shoes are a very important part of our uniforms. It is always your responsibility as a band member to keep your shoes up to performance standard. Ensure that your shoes are always cleaned and polished, white on top and black on the bottom. Purchasing white shoe polish will be necessary for you to maintain your shoes. Additionally, wet wipes and magic erasers work wonders for small touch-ups to keep your shoes in tip-top shape!

Finally and most importantly, take pride in the uniform. Wear it, carry it, and treat it with pride and respect.

Other uniform components...

Once you have received a uniform, you will need to make an appointment with the Uniform Coordinator (Mrs. Blake) to be fitted for a uniform. She will provide you with band pants, a tunic, and a hat.




It is your responsibility to purchase the following

- Navy blue TALL socks (not ankle socks)
- White band gloves (\$5 to be purchased in the uniform room)
- White Band Shoes (\$65 to be ordered in the uniform room)
- Navy Blue Suspenders (please inquire in the Uniform Coordinator)
- Red Band Shirts (\$10 to be purchased in the uniform room)
- Navy Blue Dickie (for winter season) (can be found at Mark's Work Wearhouse)
- Band Bag (or a bag of your choice) to bring to performances (can be purchased in the uniform room)
- Red Band Jacket (can be purchased in the uniform room)

Marching

Please refer to the “Training Hub” under the “Members Only” section of the website for additional marching resources.

While Standing

Name	What you will hear...	What to do...	Picture
Attention	“Band, Atten-hut”	<ul style="list-style-type: none">• Left foot slides into right• Heels together with toes 45 degrees apart• Arms straight at sides (without instrument) or regular carrying position (with instrument)• Looking straight ahead• Chin parallel to the floor• Shoulders back, good posture	
At Ease	“Band, Stand at Ease”	<ul style="list-style-type: none">• Arms clasped behind back with left hand holding right wrist (no instrument)• As per section (with instrument)• Feet are shoulder width apart• Left foot slides in left direction• Looking straight ahead• Should back and good posture	
Stand Easy	“Stand Easy”	<ul style="list-style-type: none">• Free to stretch and move around• Remain in your spot unless told otherwise	

While Marching

Name	What you will hear/see...	What to do...
Marking Time	"Band, Mark Time Move"	<ul style="list-style-type: none"> ● Marking time is essentially marching in one spot ● Left foot always hits on the down beat (1 & 3) ● Feet should rise to mid calf ● Upper body should remain steady ● Shoulders back and be proud ● Head and eyes look ahead
Halting/ Stopping	"Band, Halt"	<ul style="list-style-type: none"> ● This command is given on counts 1 and 2 ● Halt on count 4 ● Right foot is last to hit
Stepping Off	"Band, Forward Move" (You will see the mace go from a 45 degree angle to straight up for two counts then drop the mace straight down for 2 counts)	<ul style="list-style-type: none"> ● Left foot begins with a 22.5 inch stride (every stride should be this size) ● Heel hits first, roll the foot (no scuffing) ● Shoulders back and good posture ● Head and eyes looking ahead ● Punches specific to section
Punching	*No Command*	<ul style="list-style-type: none"> ● As you step off, you punch with the right arm ● Punch is straight out with your hand in a fist, keeping your thumb on top of the fist ● Arm is parallel to the ground ● Punches come up and out ● This is done on every first step forward, while not playing
Right Shoulder Arms	"Band, Right Shoulder Arms"	<ul style="list-style-type: none"> ● Instrument is moved/snapped into the playing position ● This is performed on the first count after the command ● If no instruments are being used, the right hand is clasped over the left in front of you so that your arms are parallel to the ground
Order Arms	"Band, Order Arms"	<ul style="list-style-type: none"> ● Return to the attention position ● This is performed on the first count after the command

Dressing

Name	What you will hear...	What to do...
Dressing Center	"Band, Dress Centre Dress"	<ul style="list-style-type: none"> • Head and eyes turn towards the center of the rank • Body remains in the attention position • Instruments are held parallel to the ground • When at a dress, this is your chance to make sure you are in line with the rest of the band • Dress your rank (your shoulders, hips, and heels should be in line with the person you are dressing to) • Dress your file (you should not be able to see anybody except for the person in front of you) • Dress your diagonal
Dressing Right or Left	"Band, Dress Right Dress" [or] "Band, Dress Left Dress"	<ul style="list-style-type: none"> • Head and eyes turn in the direction of the command • Body remains in the Attention position • Instruments are held parallel to the ground
Eyes Front	"Band, Eyes Front Hut"	<ul style="list-style-type: none"> • This command is used to take the band off of a dress and bring them back to attention • Head and eyes return to facing forward • Body remains in the Attention position • Instruments return to the attention position



Turning

Name	What you will hear...	What to do...
Right Turn	“Band, Right Turn” Reply: “ONE, TWO”	<ul style="list-style-type: none"> • Right Heel remains on the ground • Left Toes remain on the ground (turn to the right on the right heel and the left toes) • Left foot is placed next to the right • Upper Body remains in the “Attention position”
Left Turn	“Band, Left Turn” Reply: “ONE, TWO”	<ul style="list-style-type: none"> • Left Heel remains on the ground • Right Toes remain on the ground (turn to the left on the left heel and the right toes) • Right foot is placed next to the left • Upper Body remains in the “Attention position”
About Turn	“Band, About Turn” Reply: “CHECK, ONE, TWO, THREE”	<ul style="list-style-type: none"> • Left foot is placed forward • Body turns to the right (turning on toes) • Completed in 4 counts, 1st count dead

Key Terms

Term	Definition
Dressing Terms: File Interval Rank Diagonal	<ul style="list-style-type: none"> • Straight Line from Front to Back • Distance between two people/ranks (4 paces) • Straight Line from Left to Right • Straight Line from Corner to Corner
Tempo or Cadence	<ul style="list-style-type: none"> • Speed at which the band marches and plays (120 beats per minute while marching in parade formation)
Pace	<ul style="list-style-type: none"> • Pace size is 22.5 inches (8 paces = 5 yards) • The distance of each stride
Counts	<ul style="list-style-type: none"> • Counts 1 & 3 are on the left foot • Counts 2 & 4 are on the right foot
Centre	<ul style="list-style-type: none"> • The person/people that the ranks dresses to while marching • The middle person in an odd number rank (i.e. rank of 7 people) • In between the two middle members in an even number rank (i.e. 4 people means that person 2 & 3 would split center)

Phasing	<ul style="list-style-type: none"> • While marching "slightly" out of step, the foot hits slightly before or after the count. This gives the appearance of being out of step and swaying side to side
Corners	<ul style="list-style-type: none"> • Follow the person in front of you and turn where they do. <p>A typical corner would be performed as follows: Person...</p> <ul style="list-style-type: none"> • #1 marches forward for 12 counts and turns • #2 marches forward for 10 counts, marks time for 2 counts, turns and moves forward • #3 marches forward for 8 counts, marks time for 4 counts, turns and moves forward • #4 marches forward for 6 counts, marks time for 6 counts, turns and moves forward • #5 marches forward for 4 counts, marks time for 8 counts, turns and moves forward • #6 marches forward for 2 counts, marks time for 10 counts, turns and moves forward • #7 stops at the corner, marks time for 24 counts, turns and moves forward
Company Front	<ul style="list-style-type: none"> • Name given to a formation which when completed, ends as a straight line
Front Field	<ul style="list-style-type: none"> • Side which we perform to, Main Grand Stand
Back Field	<ul style="list-style-type: none"> • Opposite side of the front field
Oblique	<ul style="list-style-type: none"> • "Point left point" or "Point right point" • Where the company front moves in a 45 degree angle toward commanded direction
Slide	<ul style="list-style-type: none"> • "Slide left slide" or "slide right slide" • Where waist and lower body moves in the direction of the command and the upper body remains facing the front field
Centre Pivot	<ul style="list-style-type: none"> • Company front turns their line on the centre

Performances

Please review “Your First Performance” under the “Documents” section of the “Members Only” tab for additional information.

Loading up for a performance...

Once you arrive at the Music Centre for a performance, it is your responsibility to retrieve your uniform from the Uniform Room, load your instrument in the band boxes once loading crew has unloaded them from the truck, and check in with your section leader to let them know that you are here. Then, once loading crew has loaded the truck with instruments, hats, etc. we will load the buses and depart.

When on the Bus

Bus etiquette is very important. We are very fortunate to be able to travel on coach buses for the majority of our performances, and thus must be respectful at all times. Ensure that all of your garbage is disposed of on the bus, and take extra care to keep your surroundings clean while on tour, as bus rides can often be very long. During performances, Make sure to either hang your uniform or store it (flat) in the compartment above your seat to prevent creasing. Take extra care to thank the bus driver when you exit the bus, being impolite or rude is disrespectful to the name of the band, as well as the driver.

We do change on the bus for performances, so please make sure that you are wearing appropriate undergarments to do so. An instructor will inform you when it is time to change.

It is important to always pack snacks, water, and a lunch (if necessary) during the performance day. Keep yourself hydrated and well fed so that you can perform to your best ability.

Truck Etiquette

Once you have changed and been given instruction to get off the bus, the loading crew will unload the truck. Only once management has announced that you can get your instrument may you do so. Never shove your cases into the boxes, always make sure that they are properly packed... empty or full. Likewise, once you have your instrument, there is NO PLAYING on your own.

Loading Crew

Loading Crew is a fantastic way to get to know people outside of your own Section. They are responsible for loading and unloading the truck before and after performances, as well as many other duties that involve lifting things. If you are interested in becoming a part of the group, speak to your Section Leader!

Free Time

Some performances allow for “free time” where you can go shopping, get food, look around, etc. During all free time you must be in a “quad” (there must be 4 or more people together at all times) and you must all be wearing band jackets. Failure to do so will result in having to spend free time with a chaperone, or on the bus. **Never leave somebody by themselves.** When one person wants to go to the washroom, you all accompany them. When one person goes in a store, you all go in that store. The reason for the quad is so that if one person gets hurt or in trouble, one person can stay with them, and two can go and get help.

Drug and Alcohol Policy

The band has a 100% no drugs and no alcohol policy. This applies to practices, performances, and tours. Failure to abide by this rule will result in severe consequences.

Marching in the Heat

Keep yourself hydrated – drink LOTS of water and juice (avoid pop, and energy drinks). Likewise, avoid any dairy beforehand (i.e. milk, yogurt, etc.) that might make you sick. Make sure you are always wearing sunscreen and proper clothing underneath your uniform. Please review “Preparing for Hot Weather” under the “Documents” section of the “Members Only” tab.

Marching in the Cold

Bring lots of layers (must be navy blue or black). Always have your navy blue dickie with you, as well as extra gloves to layer (if applicable). You may use heat packs for your hands, feet, etc. however they are not required. Please review “Preparing for Cold Weather” under the “Documents” section of the “Members Only” tab.

Travelling/ Tours

- Please prioritize personal hygiene! Use deodorant, shower, and keep clean. Being independent is fun, but make sure you are keeping yourself clean like you would do at home. Remember, do not bring aerosols like perfume and body spray because people are allergic. If you are bringing hand cream, etc. make sure it is unscented.
- Do not overpack! Only bring what you need so you have room to purchase things. Remember that you are limited to one bag and one carry-on, so pack accordingly, leaving room for purchases. While shopping, do not buy stuff that you can get at home, and do not buy stuff that you can not fit in your bags to take home. Remember to save some money for the bus drivers for a tip when the tour is over.
- Friend drama happens. Living together for a week can be difficult, and there might be some conflicts among you and your friends. Don't be afraid to come and talk to your Section Leaders, Drum Majors, or staff about it so we can help you. If you find yourself getting sick of people, switch up your quads or eat dinner with different people. This is a great opportunity to meet new friends, so don't let drama get in the way of your tour.

- Homesickness is normal. Being away from home can be scary, but just remember that you are not alone. Confide in your friends, Drum Majors, Section Leaders, chaperones, and staff. We all know what it was like going on your first tour, so don't be afraid to talk to us.
- Clean your room / living space. Yes you have some freedom and no mom there to tell you to pick up your clothes. However, please keep your room or sleeping space neat and tidy. It will ensure you don't leave anything behind, lose anything, and that your roommates can enjoy their stay too. It is respectful to the building we are staying in and it shows that you care. Also remember to be fully dressed at all times.
- Eat well. We understand that not having your parents there to make you eat your fruits and veggies is exciting. But on tour, you will be constantly performing, sightseeing, walking, etc. So it is important to keep yourself fuelled... that means more than chips and pops for meals! NEVER EVER skip breakfast! Get plenty of protein and vitamins, and eat food that will boost your energy, not destroy it.
- Quad up! It is a band rule that during any and ALL free time, you must be in a group of four people or more. You are NOT allowed to venture off alone, or with less than four people. That means that you don't go to the washrooms without your group. If one person goes into a store, you all go into that store. If you can't find a group to join, come see Drum Majors, staff, or a chaperone and we can help you find a group. Don't be nervous that you won't find one, because you are always welcome in their quads!
- Remember, we are the Pride of Burlington. While on tour, you are representing the band. Please remember manners. Those include removing hats while at a dining table, saying "please" and "thank you" ALL the time. That also includes apologizing profusely, even when it isn't our fault... after all, we are Canadian! Just remember to show respect to everybody while on tour.
- We are there to perform. Yes the tour will be fun, but we are first and foremost there to perform. So make sure you are getting proper hydration and rest, packing all uniform items, and preparing yourself to perform like we are known for. Please take care of yourselves so we can perform to our full potential. This includes bringing all required uniform equipment such as clean gloves, clean shoes, a magic eraser for your shoes in between performances, tools to clean your instrument, etc. This also means that when the uniform goes on, jewellery and makeup comes off.
- Do not do anything you wouldn't do at home! Smoking, drinking, and drug use are strictly forbidden. Under no circumstances may a band member indulge in these things while on tour. If you are caught under the influence, severe consequences will be inflicted upon you and it will ruin your tour. Do not do anything that your parents would not be proud of, and do not disrespect the band rules.

What does the tour cost cover?

The tour cost covers transportation, accommodations, meals, and all activities covered in the itinerary. The tour cost does NOT cover any personal shopping or activities during free time separate from the mass band.

Chaperones

Each band member is assigned a chaperone for the tour. The member will meet their chaperones as well as speak with the member's parent(s) prior to the tour. While on tour, chaperones are responsible for distributing member's food money, ensuring they are safe, enforcing curfews and lights out, etc.

Moving around in the Band...**Promotion**

There are many factors that influence the decision to promote a band member. Band Management values the "Three A's" when searching for a member to promote; these are Attendance, Attitude, and Ability (in that order). If you are interested in being promoted, please inform your Section Leaders so they can assist you in achieving your goal.

Section Leader

Section Leader elections are held during the month of August, and the position consists of a full year term running from September to the following August. The election process includes a short speech to your section as well as section instructors, the music director, and the band director, and is followed by a question period and then the voting process. The role of a Section Leader is to instruct, motivate, and lead their section in all aspects of band life. Section Leaders must maintain 90% attendance or greater during their term. Please note that in order to apply for this position, you must be able to commit to the full term, as well as attend all tours.

Drum Major

Band members also have the option of being promoted to Drum Major should management offer them the position and should they accept it. The role of a Drum Major is to assist, lead, motivate, and instruct Section Leaders, as well as band members. Likewise, they are to assist Management and Instructors in band related tasks.

Can I switch instruments once in the band?

Yes! You are able to switch instruments and/or sections once you have joined band. Please notify your Section Leader or Drum Major if this is an interest of yours.